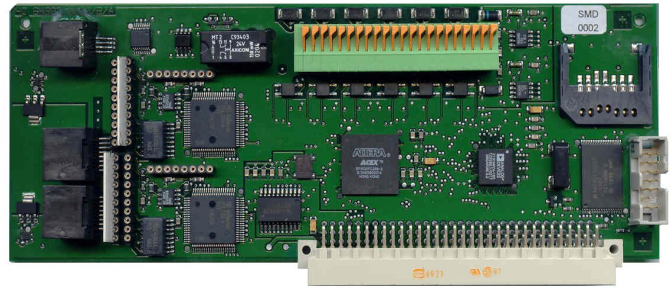


SMD-E1 Service module for MidiStar FLASH-4 and FLASH-8

Part number 2322

Digital service module „E1“



This digital service module is an enhanced model of the SMD standard (part no.2323) with additional 2 “E1 ports”.

Highlights

- Voice announcement via Flash technology (Music download by wave file)
- Remote maintenance
- Remote switch outputs Z1 to Z6, also configurable as switch inputs
- 2 x E1 ports (for the linking of several systems)¹
- Supports CLIP for analogue subscribers on TSA-6 and TSA-8 (starting from GS 07)
- DSP technology and Flash memory

¹ software key required for connection of E1 ports by: SW-KEY E1 (SMD-E1) part no. 2210

Technical notes

| Dimensions packaged: 215 x 110 x 40 mm | | Weight: max. 0,13 kg |
|--|---|------------------------------|
| Switch outputs | Z1+/- up to Z6 +/- | TOE1 / TOE2 |
| Application | Optocoupled outputs for counter, busy contact aso. | Relay output for door opener |
| Connector | 2-wire, clamp terminal | 2-wire, clamp terminal |
| Switch power | Max. 24V = / 50mA | Switch power max. 95V = / 1A |
| Switch inputs | Z1+/- up to Z6 +/- (alternatively usable instead of switch outputs) | |
| Application | Optocoupled inputs for sensor applications | |
| Connector | 2-wire, clamp terminal | |
| Input voltage | Necessary switch voltage 12V = up to 24V = | |
| Outputs/power supply | +T / GND | +Ub / GND |
| Application | Switched power supply for door speaker | Permanent power supply |
| Connector | 2-wire, clamp terminal | 2-wire, clamp terminal |
| Output voltage | 24V = / 75 mA | 24V = / 75mA |
| Ports | A, B | |
| Application | E1-ports configurable as subscriber or network | |
| Protocol | PRI / EURO-ISDN (EDSS1) | |
| Connector | RJ-45 | |

Technical requirements: see SMD-card_03-2004_TR-eng